

MANVISH eTech Private Limited

Manvish eTech private limited is an embedded engineering products and services delivery company. Established in 1999 Manvish has been catering to the embedded system markets and are privilaged to count many MNC and government organizations among its customers around the world. Manvish has experienced people who are doctorates, Scientists, hardware, firmware and networking specialists as its employees. We have the capability to bring out products from concept through production and some of our proucts and IPs are already in the market.

Our other activities are:

- Setting up of embedded labs in colleges and companies
- Corporate training
- Scheduled calendar training

Corporate Office:



MANVISH eTech Pvt. Ltd.
 502, Prestige Meridian II, 30, M. G. Road,
 Bangalore 560 001. India
 Tel : 91-80-2532 1327 / 5124 0164.
 Telefax : 2532 1327
 E-mail: manvish@manvish.com



www.manvish.com

Today in a fiercely competitive world, systems and processes are vital to administering and managing any organization effectively and efficiently. The larger the organization the more integral these systems and processes become. However these very systems and processes should be invisible and while not causing any additional burden to the users, should assist and alleviate them from the routine mundane tasks. Automation with technology that can unobtrusively, conveniently and in relevant time assist the organization is what will make both the systems and the organization a paragon of success.

With this underlying philosophy, Manvish eTech Pvt Ltd established in 1999, designed a complete Web-enabled Campus Automation software CA++ system for educational institutions. The systems is a result of several man-years of effort by Manvish's designers among whom are Academicians, Professors and Researchers, Doctorates, Educational content development experts, hardware and software technologists. With a complete understanding of all of the integral processes of an educational institution the package is designed so as to be easily installed and understood by all the users of the system and can go on-line in a very short time-frame. It is successfully running for several years.

Who can use these systems?
 This package can be implemented across any type of educational institutions

- Professional Colleges
- Management institutions
- Para-Medical Institutions
- Teachers Training colleges
- Polytechnics
- Pre University / Junior Colleges
- Primary and secondary Schools
- Training Institution (include Franchisees)
- Degree Colleges
- Residential Schools
- Universities
- Society / Trusts



Web-CA⁺⁺

Complete campus automation software
For all academic Institutions

The Package

The architecture of the software allows the primary participants viz.,

- Teacher
- Student
- Management
- Parent

Access to the relevant portions of the systems independently. They are all integrated and on-line all the time.

The Benefits of Web-enabling

The Web-enabling feature of the system being on-line all the time can be accessed on the web in real-time by the respective individuals, institutions and allows ease of access to all:

- The students, teachers, principal and other staff can work at their convenience and access their part of the system from anywhere on a PC.
- The governing bodies or trusts that manage multiple institutions spread across different geographies can now have visibility of the institutions operations
- Conditional access to the statutory bodies such as the Universities, AICTE, DTE, directorate of school education and other such governmental regulatory bodies.
- The data of every student is on-line from admission to certification and thereafter passes to an alumni database after passing out. This allows for any admitting higher educational institution, employer or scholarship, grants giving body etc., anywhere in the world access to verify the details of the concerned individual very conveniently.
- Enhances the reputation and stature of the institution while lending itself to transparency.

Robust and tested Technology

- Already in use for several years.
- Evidence of handling data in excess of terabytes
- High levels of security and restricted visibility as per heirarchy
- Uses ORACLE database for very high data volume and traffic
- User friendly front end screens

Flexible Implementation Plan

- The implementation plan is flexible to allow either a one-time or phase-wise deployment.
- The entire system can go on-line within few weeks.
- Scalable : Can start with admission and attendance modules and scale it upwards to add up the balance modules.

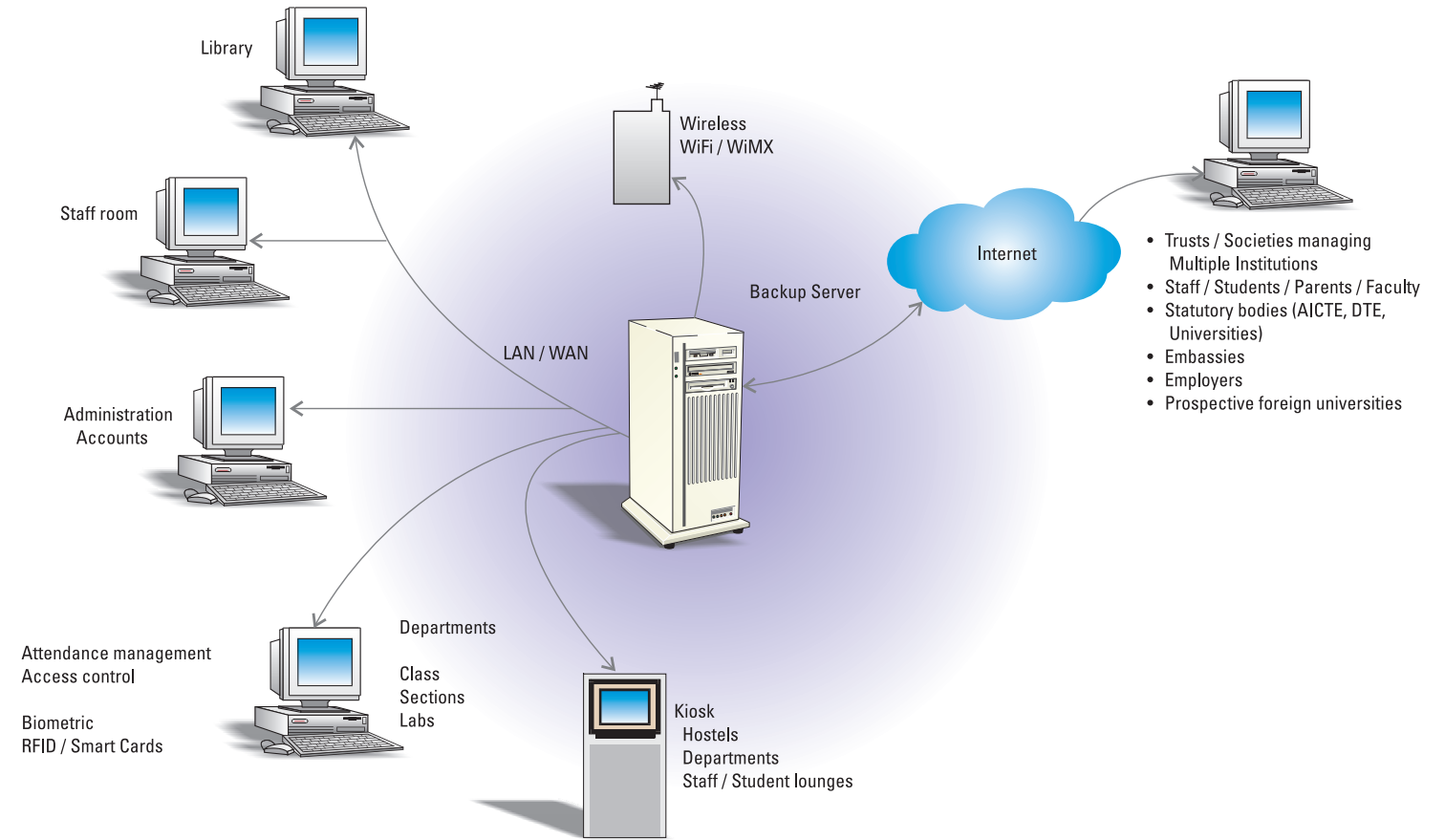
Prerequisites for a complete campus-wide automation

- Start with a few connected Desktop PC
- For Internet connectivity one static IP server with campuswide LAN / WAN
- For automatic attendance capture
 - Bio-metric / RFID card / Smart cards
- Available on Windows / Linux operating systems

Hosting and managing services

Manvish also provides servers for hosting the institution's web servers. This will enable to avail the benefits of internet access at an affordable rental/services fee.

Manvish - Complete Campus-wide Automation



THE SOFTWARE SYSTEM DETAILS

The structure of the software is modular to keep the dependent modules integrated and on-line.

